



Easy Picker Golf Products, Inc.

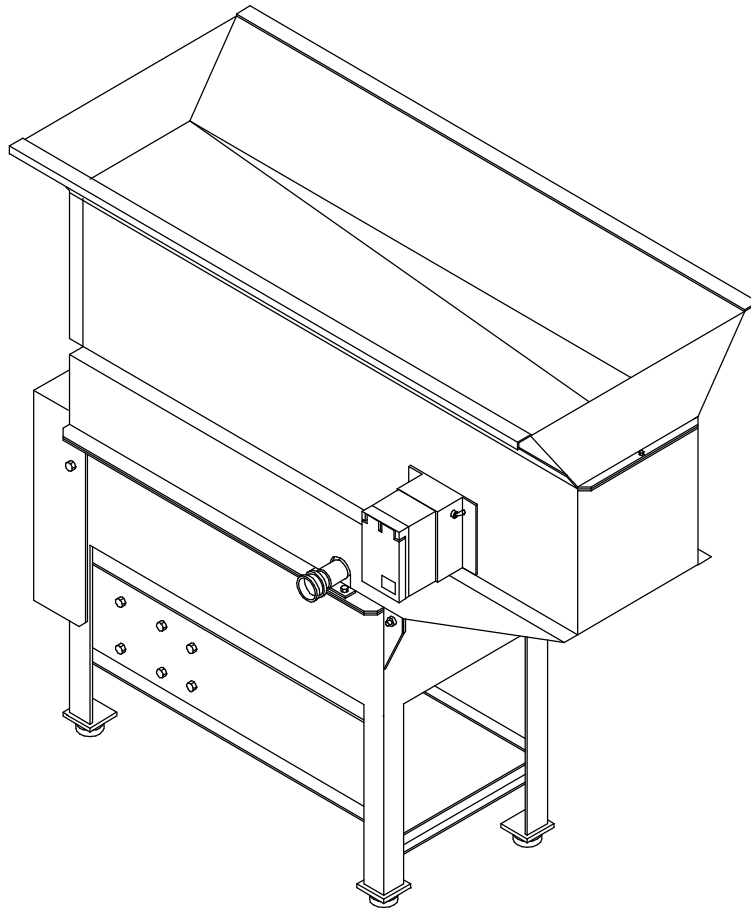
415 Leonard Blvd. N., Lehigh Acres, FL 33971

PH: 239-368-6600 FAX: 239-369-1579

Service: 800-982-4653 SALES: 800-641-4653

www.easypicker.com salesdept@easypicker.com

INSTALLATION and OPERATION BALL WASHER MODEL NO: BW-001AN



KEEP THIS DOCUMENT WITH MACHINE FOR FUTURE REFERENCE

Table of Contents

Introduction	3
Specifications.	3
Warranty Policy	3
Inspection.	4
Installation	4
Operating Instructions	4
Periodic Inspection and Maintenance.	5
Troubleshooting.	9
Brush Assembly Replacement Procedure	11

List of Figures

Figure 1: Tower / Hopper Assembly	7
Figure 2: Tank Assembly	8
Figure 3: Spiral Assembly	10
Figure 4: Switch Assembly	12
Figure 5: Wiring Schematic (1989 – 2000).	14
Figure 6: Wiring Schematic (2000 - present)	15

List of Tables

Table 1: Inspection Guide	6
Table 2: Troubleshooting Guide	10

Introduction

Welcome to the Easy Picker family. We Know you'll find our equipment to be of the highest quality. We are sure you will enjoy many seasons of reliable use. Easy Picker's ball washer is designed to be low maintenance and is manufactured at our own facility to ensure utmost quality.

The Easy Picker ball washer is constructed of heavy-duty aluminum. All exterior panels are treated to resist rust and corrosion, then sealed with an epoxy coating to ensure long life. Our ball washer's interior ball cleaning system has a motor driven feed design. All interior ball washing/delivery components are made of stainless steel and aluminum.

This manual contains instructions for operation, maintenance and troubleshooting for the ball washer, designed and manufactured by Easy Picker Golf Products, Inc., 415 Leonard Blvd. N., Lehigh Acres, FL 33971

Specifications

Easy Picker offers two sizes for ball washing and will build custom orders to meet almost any customer situation. In addition, Easy Picker can design, for or with you, custom ball handling systems for connections between Easy Picker ball washers, elevator/conveyor systems and ball dispensers.

Cleaning Rate: 22,500 Golf Balls Per Hour

Hopper Capacity: 1,000 Golf Balls

Std. Dimensions: 39"H x 41"L x 19"D

Weight: 90 Pounds

Power Requirement: 220 VAC, 50 Hz, 3.5 FLA

Warranty

Easy Picker Golf Products, Inc., warrants this product against defects in materials and workmanship for a period of ONE YEAR from the date of purchase. This warranty EXCLUDES any malfunction or damage due to customization and/or abnormal use of the product or product operation not in compliance with the OPERATING INSTRUCTIONS section of this manual.

Inspection

Within one (1) business day of delivery, remove outer protective packaging from ball washer and inspect for any damage which may have occurred during transit . If damage has occurred, **DO NOT** remove ball washer from shipping pallet or discard any packaging materials removed during inspection. Notify the freight carrier immediately to arrange a claim and inspection. Also, notify Easy Picker Golf Products, Inc. of damage. Failure to perform any of the above procedures in a timely fashion may compromise any warranty coverage by either the freight carrier and/or Easy Picker Golf Products, Inc.

Installation

- Install leveling feet on each tank leg, using two hex nuts and washers provided on each foot.
- Place ball washer on a sheltered, level concrete surface or equivalent. Be sure to allow adequate access clearance on all sides and overhead for loading balls into hopper.
- Level ball washer, if required, by adjusting mounting feet using 9/16" open-end box wrench, until cabinet is level, both side to side and front to back. Allow adequate side clearance for range ball pails.
- Connect facility power to ball washer via input power cord.

Operating Instructions

- Open tower/hopper assembly to expose tank assembly.
- Close tank ball valve.
- Fill tank with water until fill line is reached.
- Connect water hose to top wash inlet if needed.
- Turn on water to top wash to desired spray, depending on ball dirt condition.
- Adjust tank drain valve to maintain constant tank fill line level, if required. Do not allow water to overflow tank.
- Close tower/hopper assembly to tank assembly and install opposite end fasteners.
- Place a ball storage bin next to the ball washer outlet for clean balls.
- Turn on ball washer by actuating toggle switch to the "ON" position.
- Fill hopper with golf balls.

- Observe balls existing ball washer for proper cleaning and flow rate. If ball flow is too slow, then the ball washer will need to be tipped slightly towards the brush pulley end of the machine. If no balls are exiting from the outlet, then open tower door to observe if balls are jamming in feeder track. If this is the case, then the ball washer will need to be tipped slightly towards the pivot end of the machine. Balls should flow at a smooth, steady pace for normal operation.
- Turn off ball washer when all balls have exited the machine by actuating toggle switch to the "OFF" position.

Periodic Inspection and Maintenance

Periodic inspection and maintenance of the ball washer is necessary to discover any indications of malfunction or failure and to prevent breakdown of the equipment.

These procedures must be performed regularly and thoroughly. Through proper inspection and maintenance, equipment that is not in continuous use is kept ready for operation when necessary and the ball washer is maintained for peak performance for the maximum service life of the machine.

The periodic inspection and maintenance for the various components of the ball washer are listed in the following table. This table gives the inspection interval, inspection point, inspection procedure and service for remedy of defects revealed during inspection. All defects revealed during inspection should be corrected before further operation of ball washer is attempted.

WARNING

ENSURE ELECTRICAL POWER HAS BEEN DISCONNECTED BEFORE PERFORMING ANY REPAIR PROCEDURES OR CONTINUITY CHECKS TO AVOID PERSONNEL INJURY. USE CARE WHEN PERFORMING VOLTAGE MEASUREMENTS TO AVOID PHYSICAL CONTACT WITH PARTS OR SURROUNDING CIRCUITS.

Table 1: Inspection Guide

Inspection Interval	Inspection Point	Inspection Procedure and Service
Daily	Machine Exterior	<p>Check exterior for evidence of physical damage, loose hardware or input power connection. Tighten and/or repair as necessary.</p> <p>Check electrical wiring for frays, obstructions or deterioration. Replace as necessary.</p>
	Machine Interior	<p>Open tower door and inspect for any foreign debris. Remove.</p> <p>Check tank water level. Fill, if required.</p>
Monthly	Cabinet Interior and Exterior	Inspect for scratched paint areas. Apply touch-up paint as necessary.
	Cabinet Interior and Exterior	Inspect tower/hopper assembly and tank assembly for loose or missing fasteners. Tighten or replace as necessary.
	Brush Spiral Cage	<p>Inspect brush for wear. Replace, if required.</p> <p>Inspect spiral cage for wear . Replace, if required.</p>
Monthly	Tank	<p>Drain tank by fully opening ball valve.</p> <p>Clean tank bottom of all debris and wipe clean. Replace drain stopper and close hose bib. Fill tank with clean water to fill line. Hose bib will require readjustment, if top wash is used.</p>
	Top Wash	With water running, inspect delivery tube slots for clogging. Remove clogs using knife, if required.
	Drive Belt	Remove pulley cover, inspect belt tension. Tension belt for approximately 1/2" deflection. Belt tension adjustment is accomplished by loosening drive motor mounting bolts. Tighten motor mounting bolts after adjustment.

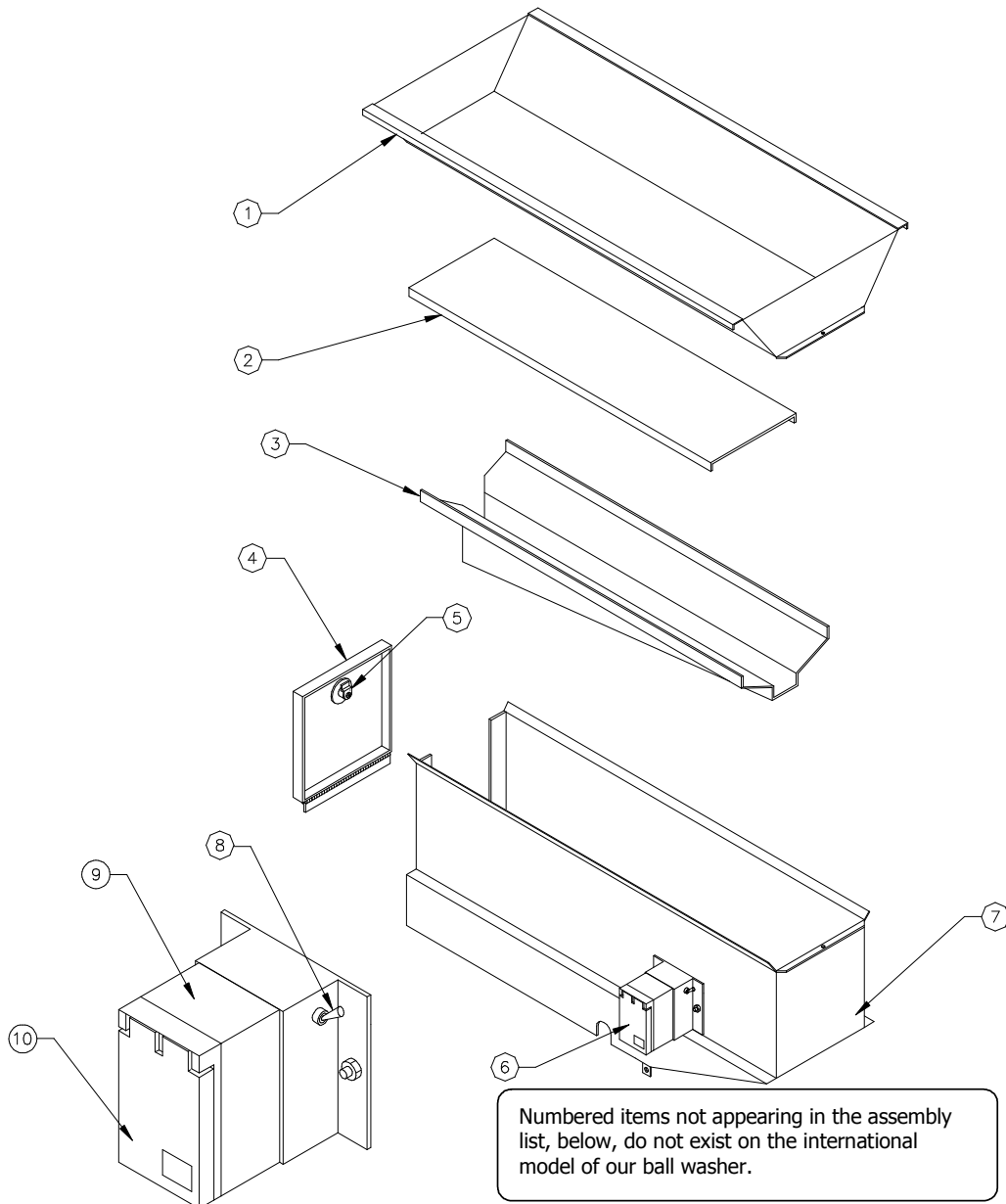


FIGURE 1: TOWER / HOPPER ASSEMBLY

Item	Qty	Part No.	Description
1	1	BW-028	Hopper
2	1	BW-101	Floor
3	1	BW-027	Feeder Track
4	1	BW-102	Door, Tower w/ Hinge
5	1	BD-042	Lock, NO Key
7	1	BW-026	Tower
8	1	BW-029	Switch, Starter – see Figure 4

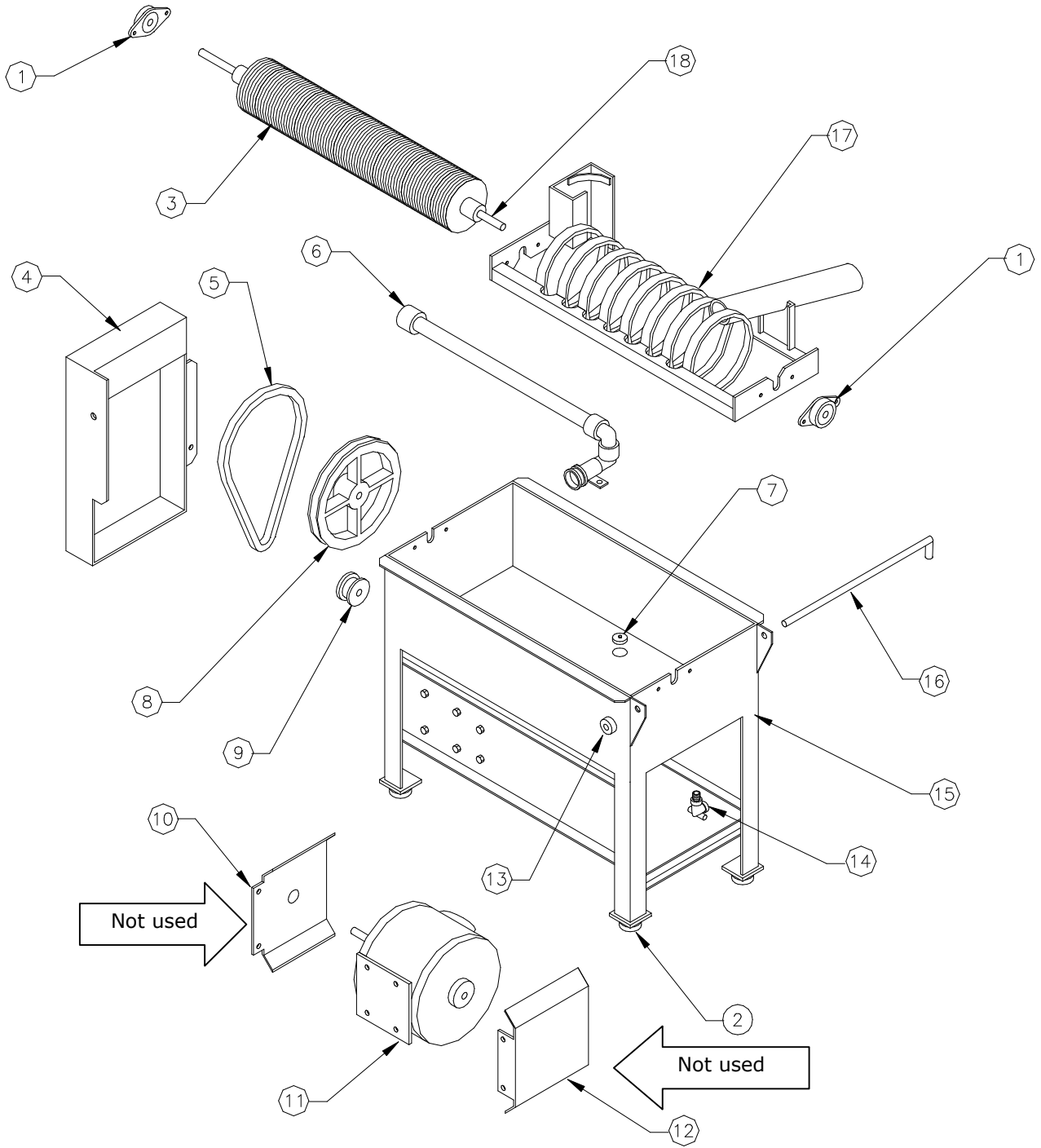


FIGURE 2: TANK ASSEMBLY

TANK ASSEMBLY PARTS LIST

Item	Qty	Part No.	Description
1	2	BW-008	Bearing, Shaft
2	4	HA-143	Foot, Adjustable
3	1	BW-036	Brush w/ J-Bolt and Nut
4	1	BW-020N	Cover, Pulley
5	1	BW-007 BW-018	Belt, Drive 37" (1989 through 3/2001) Belt, Drive 38" (4/2001 through present)
6	1	BW-033	Top Wash Assembly
7	1	BW-034	Stopper, 1 ¼" (1989 - 1998)
8	1	BW-004	Pulley, Brush (8")
9	1	BW-017 / BW-080	Pulley, Motor (2") 1989 – 2006 / 2007 - present
10	1	CALL EP	Guard, Splash, Front (1989 - 1997)
11	1	BW-016	Motor, Drive
13	1	HA-145	Collar, Shaft
14	1	BW-021 HA-376	Hose Bib, ¾" (1989 - 1997) Valve, Gate, Brass, 1¼" (1999 – present)
15	1	BW-019N	Tank Assembly
16	1	CALL EP	Shaft, Pivot
17	1	BW-010/BW-010N	Spiral Assembly w/ Inner Brush (See Figure 3, page 10)
18	1	BW-036	Brush w/ Shaft

Troubleshooting

Any evidence of malfunction, however minor in character, should be investigated and corrected before it develops into a major fault which may disable the ball washer for lengthy and costly repairs. Troubles most likely to be encountered, their probable cause and remedy, are listed in the following table:

WARNING

ENSURE ELECTRICAL POWER HAS BEEN DISCONNECTED BEFORE PERFORMING ANY REPAIR PROCEDURES OR CONTINUITY CHECKS TO AVOID PERSONAL INJURY. USE CARE WHEN PERFORMING VOLTAGE MEASUREMENTS TO AVOID PHYSICAL CONTACT WITH PARTS OR SURROUNDING CIRCUITS.

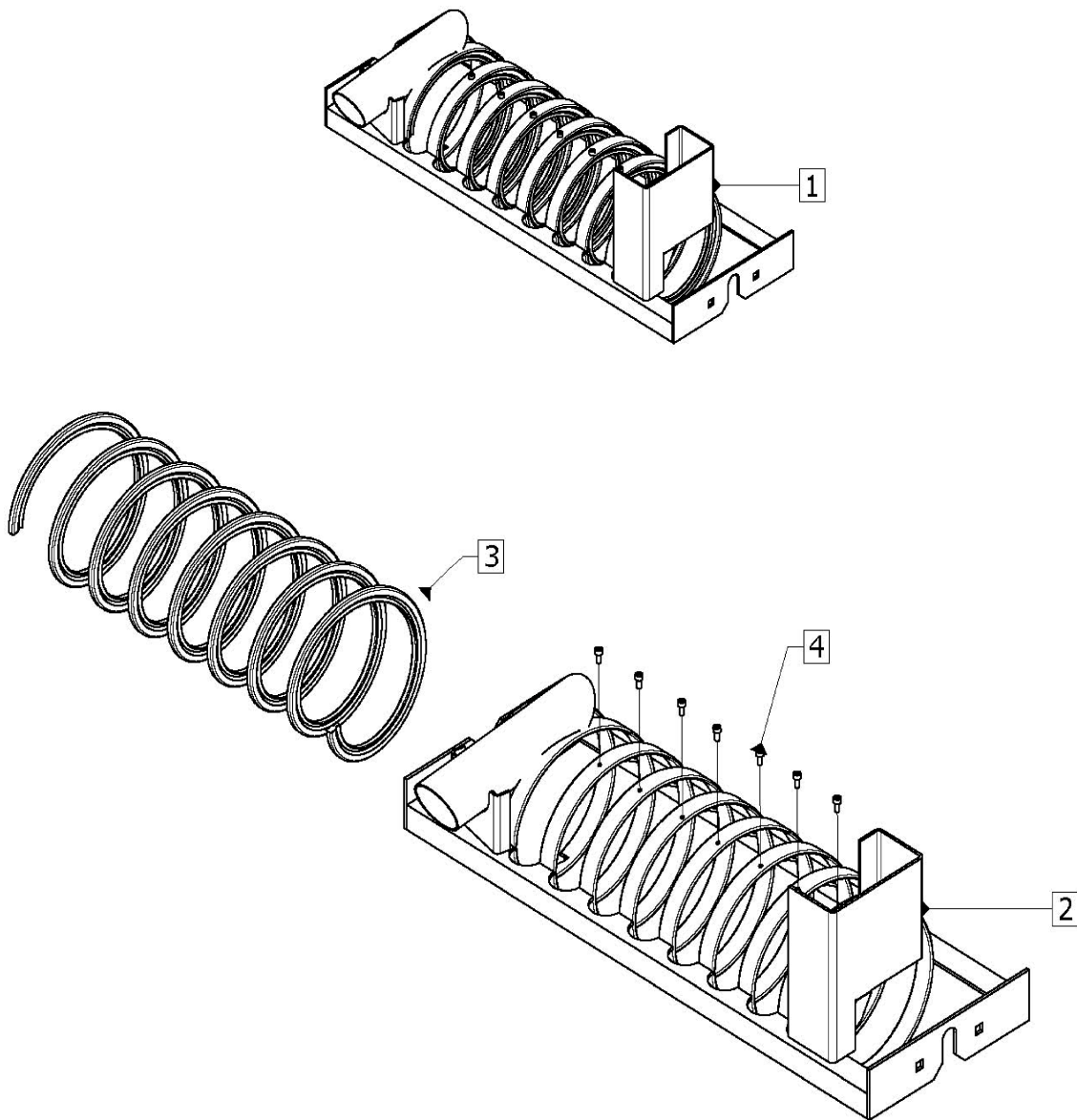


FIGURE 3: SPIRAL ASSEMBLY

Item	Qty	Part No.	Description
1	1	BW-010N	Spiral Assembly (includes items 2 – 4)
2	1	Call	Spiral Assembly w/out Inner brush
3	1	BW-003A	Brush, Inner, Black
4	18	Call	Screw, Self-tapping #6 x ³ / ₈

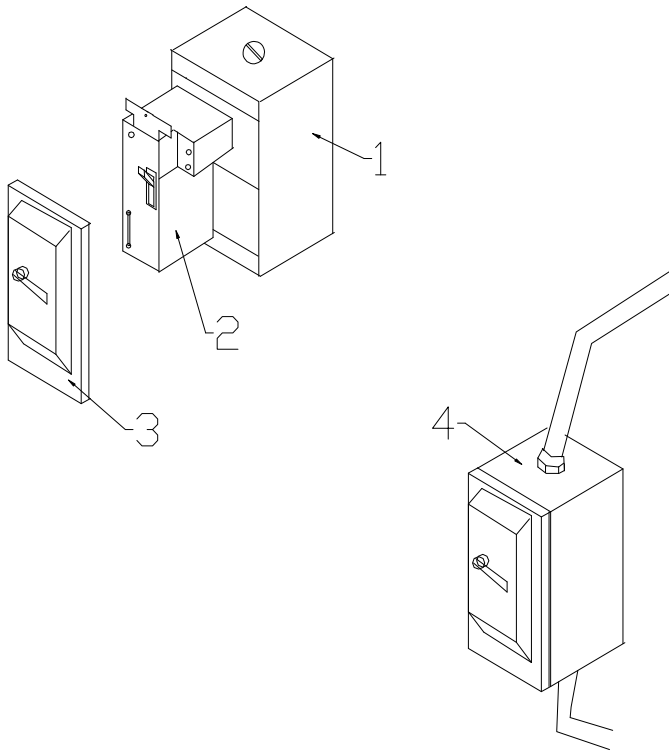


FIGURE 4: SWITCH ASSEMBLY

ITEM	QTY	PART#	DESCRIPTION
1	1	HA-67	Box, Weather proof 4" x 2"
2	1	BW-029	Switch, Starter 2 pole
3	1	CALL FOR INFO	Cover, Switch w/red toggle
4	1	BW-037IN	Starter, Switch Assembly

Table 2: Troubleshooting Guide

Trouble	Probable Cause	Remedy
Ball Washer will not run when toggle switch is in the "ON" position.	Power Cord	Verify facility power is turned on. Verify Power Cord is plugged into facility power.
	Toggle Switch	If power is present, check for power on each terminal on toggle switch, with toggle switch in the "ON" position. If power is not present on both terminals, then toggle switch is defective and must be replaced. If toggle switch is not defective, then check motor wiring and/or perform continuity check on motor. Replace as required.
No Balls Exiting From Washer	Feeder Track Blocked Spiral Assembly Blocked	Open tower door and inspect for debris and/or broken golf ball(s).
	Machine Not Leveled Properly	See Installation Procedure.
Balls Exiting at a Slow Rate	Machine Not Leveled Properly	See Installation Procedure.
Balls Not Cleaning Properly	No Top Wash	Connect Water Supply and/or Adjust.
	Low Tank Water Level and/or Dirty Water	Fill Tank with Clean Water.
	Worn Brush Assembly.	Replace. See Brush Assembly Replacement Procedure.

Brush Assembly Replacement Procedure

- Open tower/hopper assembly, to expose tank assembly, by removing fasteners on pulley end of tower.
- Remove belt cover to expose 8" pulley.
- Remove belt.
- Remove 8" pulley.
- Remove shaft bearings from each end of spiral cage and remove spiral cage from tank assembly.
- Pull out brush and shaft assembly from end of spiral cage.
- Install replacement brush/shaft assembly. If replacing brush only, then remove J-bolt from brush end and remove brush from shaft. Install new brush onto shaft and install new J-bolt, supplied with brush.
- Install brush back into spiral cage and position spiral cage back onto tank assembly, using fasteners.
- Replace shaft bearing on each end of spiral cage. Center brush/shaft assembly in the spiral cage by aligning shaft bearings in mounting slots and tightening fasteners.
- Replace 8" pulley.
- Replace drive belt and belt cover.
- Close tower/hopper assembly and install pulley end fasteners.

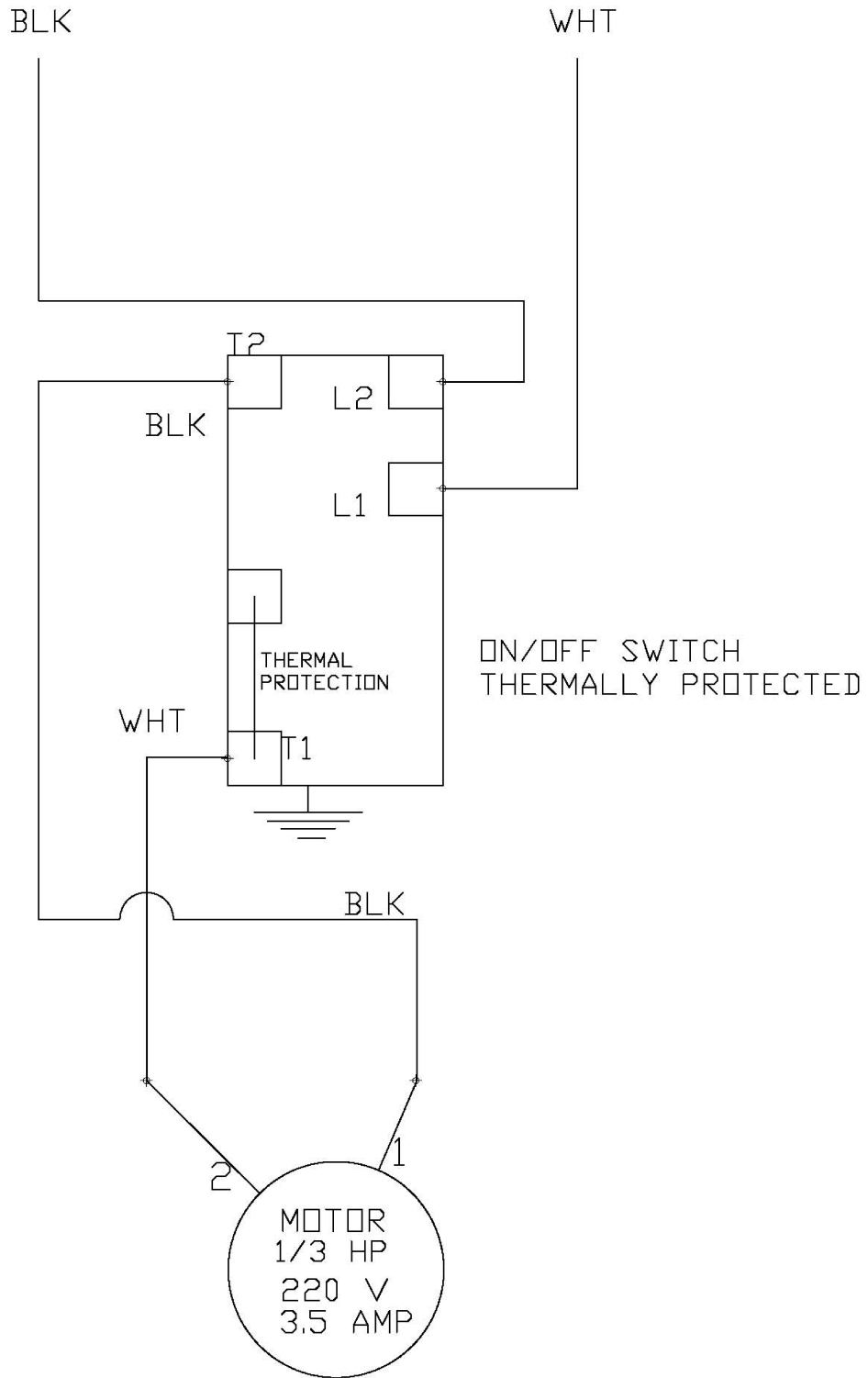


FIGURE 5: WIRING SCHEMATIC 1989 THROUGH 2000

WIRING SCHEMATIC FOR 22K B/WASHER
INTERNATIONAL
4/2001 TO PRESENT

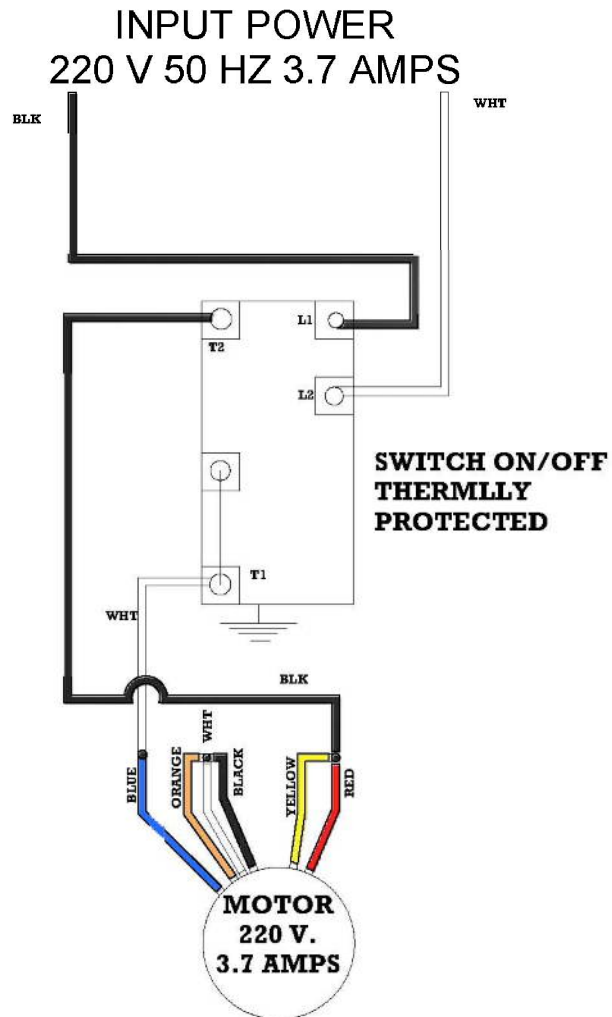


FIGURE 6: WIRING SCHEMATIC 2001 TO PRESENT